

Community Energy Fresno

dba Comunidades de Energía, Fresno

Community Determined Community Benefits from Clean Energy Development

A Multi-Community Nonprofit with the Inclusive Representation, Standing, and Power to Secure
Significant Community Benefit Agreements in Western Fresno County

April 22, 2024

Jose Antonio Ramirez (Community Development, Inc/ RCI): Kickoff presentation and conversation: Introductions, recognitions, background, context and collaboration goals

Dr. Matthew Jendian (CSU Fresno): Shared research, outreach, engagement and capacity building orientation of work with western Fresno County communities

Data on Western Fresno County:
Elevated Poverty Rates & Economic Inequality
and
Opportunities to Address these Disparities

Matthew Ari Jendian, Ph.D.

Professor of Sociology



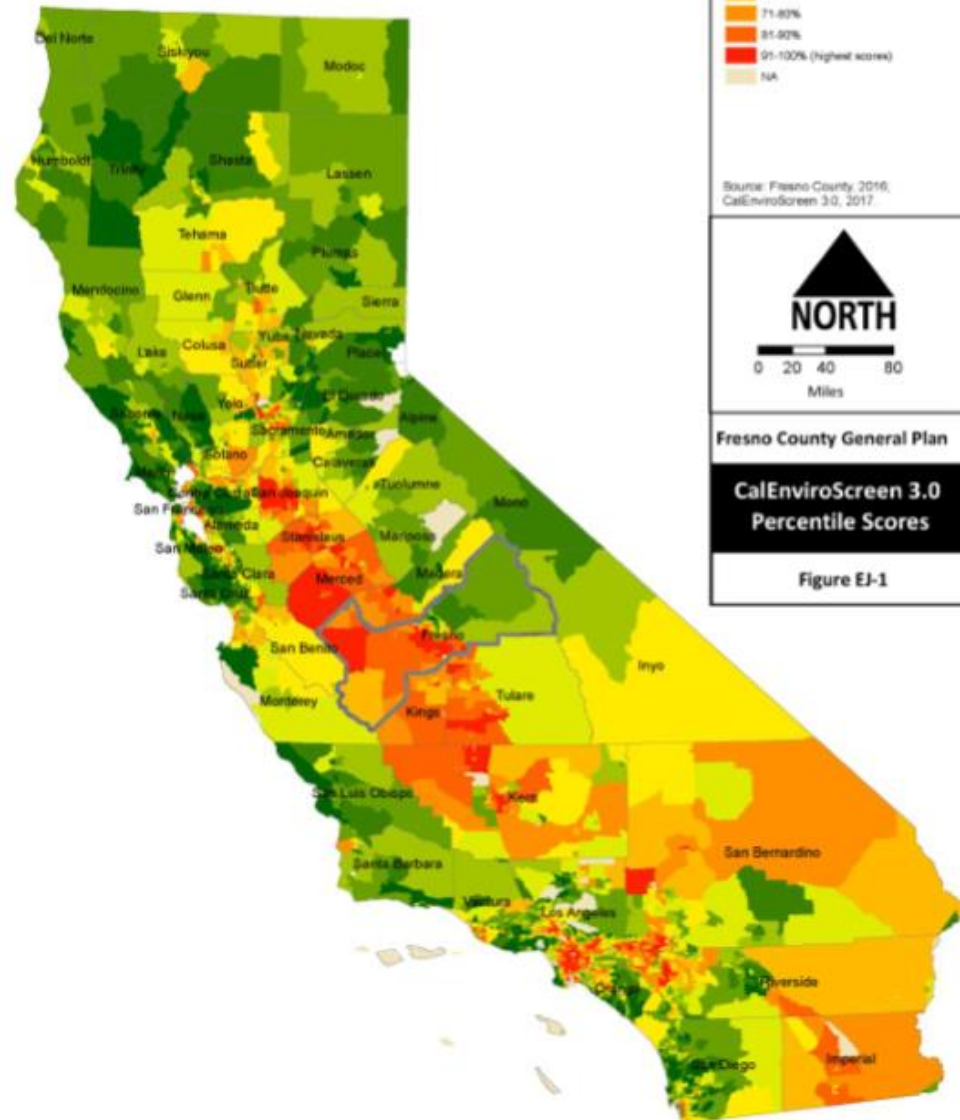
- According to California Code section 65040.12, “environmental justice” is the fair treatment of people of all races, cultures, and incomes with respect to the development, adoption, implementation, and enforcement of environmental laws, regulations, and policies.”
- Communities with lower incomes, lower levels of education, and higher proportions of minority residents bear a disproportionate burden of environmental hazards.
- Furthermore, all people including those who live in disadvantaged communities should have the equal ability to participate in the decision-making process regarding environmental regulations.

2022 Poverty Rates and Median Family Incomes for Cities in Western Fresno County Compared (U.S. Census Bureau)

City	Poverty Rate	Net % Above or Below Fresno County Poverty Rate Average	Median Family Income	Net % Above or Below Fresno County Median Family Income Average
Firebaugh	43.3%	132.7% above	\$36,078	46.8% below
San Joaquin	33.2%	78.5% above	\$43,750	35.4% below
Mendota	32.7%	75.8% above	\$43,315	36.1% below
Huron	32.1%	72.6% above	\$43,664	35.6% below
City of Fresno	22.1%	18.8% above	\$63,001	7.01% below
Kerman	21.9%	17.7% above	\$53,956	20.4% below
Coalinga	18.7%	0.54% above	\$68,976	1.8% above
Fresno County	18.6%	N/A	\$67,756	N/A
California	12.2%	34.4% below	\$91,905	35.6% above

GOALS AND POLICIES

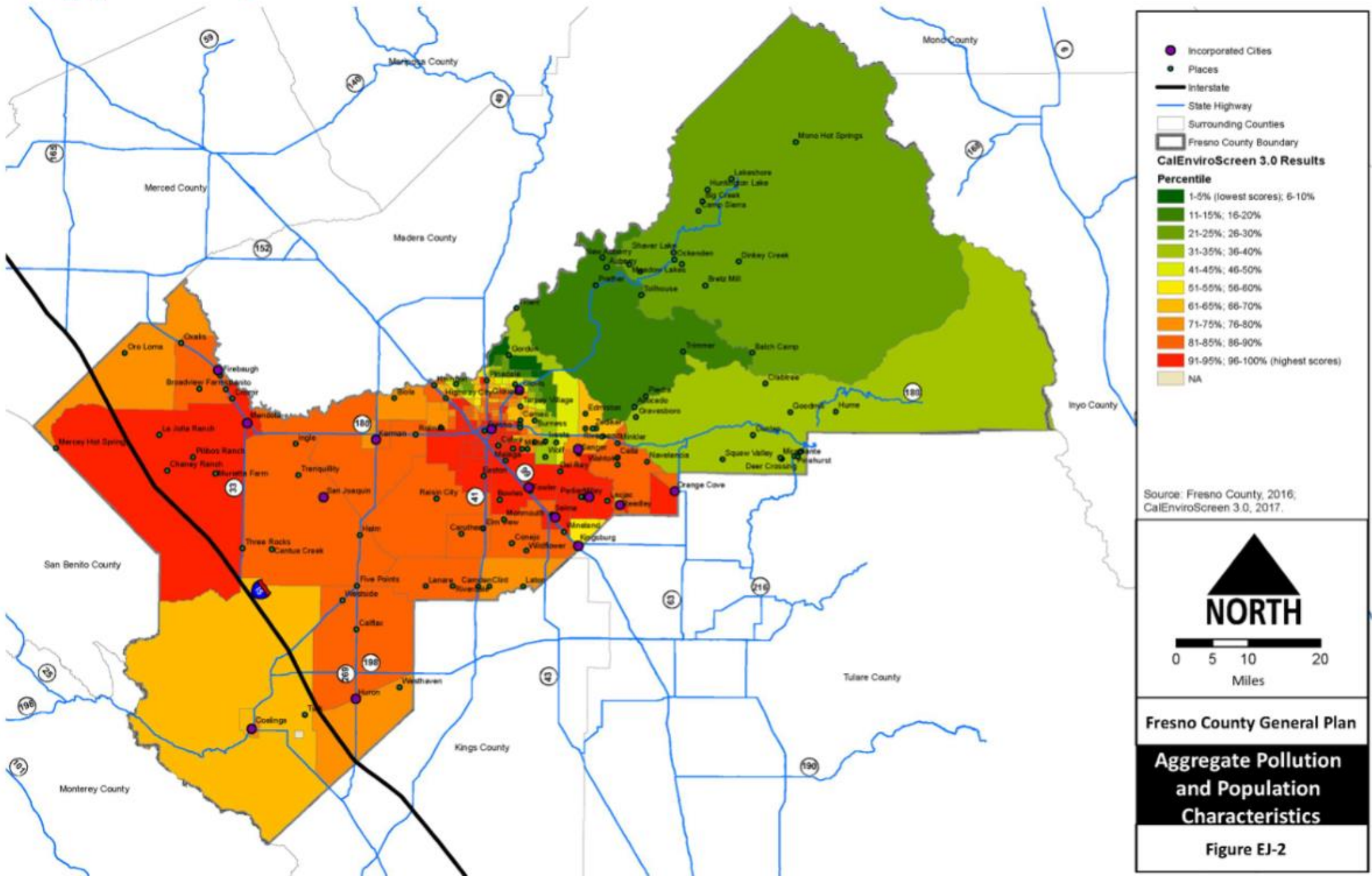
ENVIRONMENTAL JUSTICE **2**



This major finding serves as a foundation for policy development:

- Western Fresno County has **higher rates of disproportionate environmental hazard exposure**, relative to the rest of the state, according to **CalEnviroScreen 3.0**.

Figure EJ-2 Aggregate Pollution and Population Characteristics



Figures EJ-3 & EJ-4 show the Pollution Burden Scores and Population Characteristics Scores

Figure EJ-3 Pollution Burden

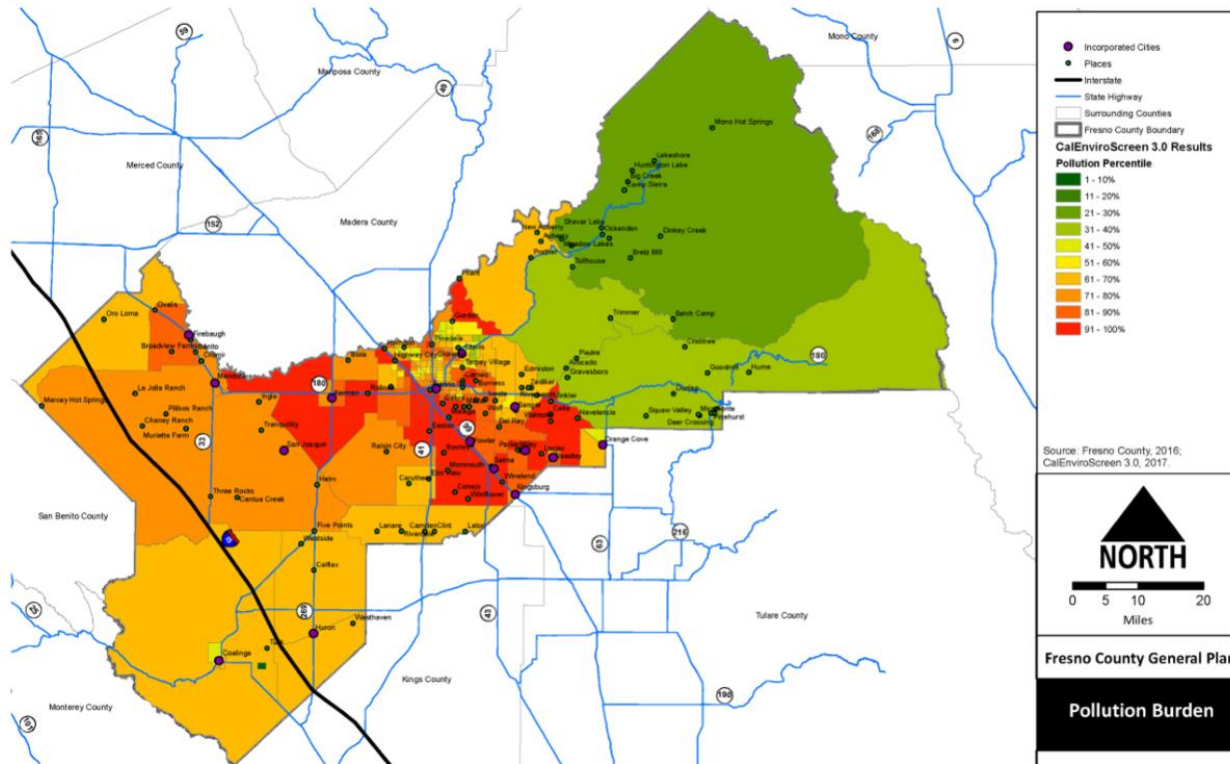


Figure EJ-4 Population Characteristics

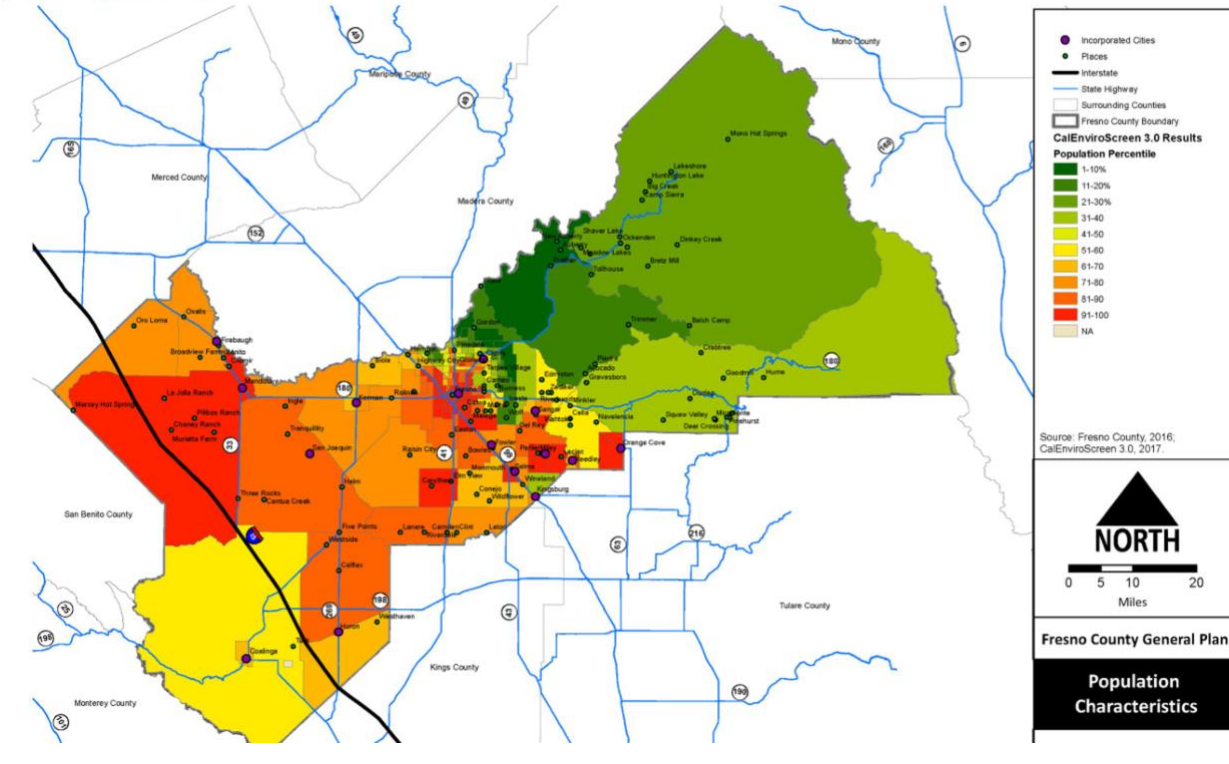
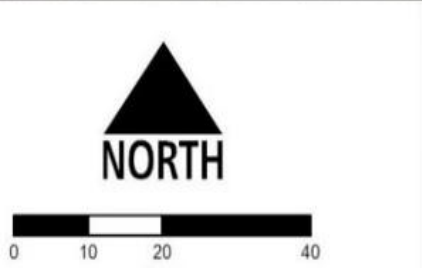
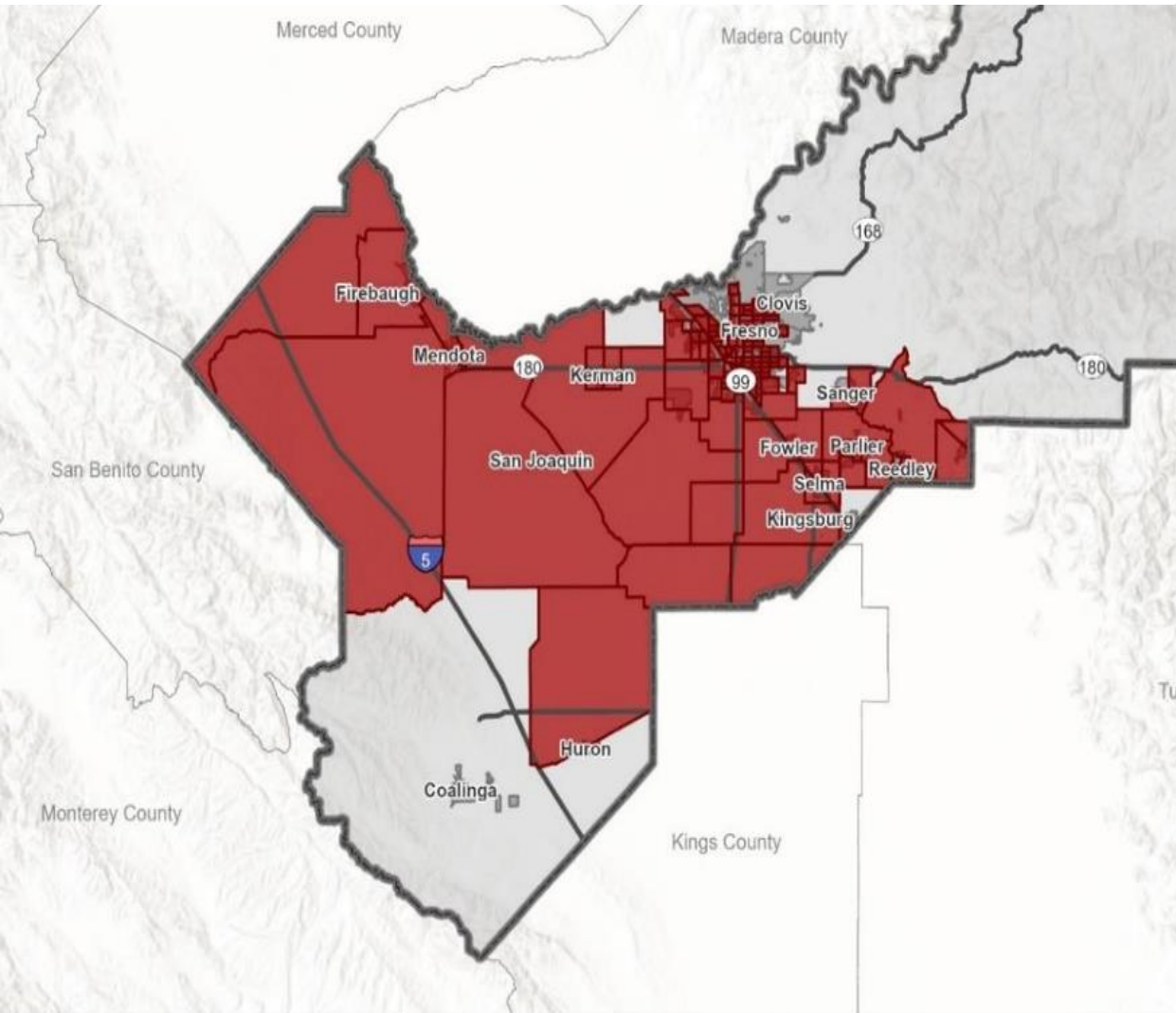


Figure EJ-5 SB 535 Disadvantaged Communities



Fresno County
 County Roads
 Freeway/Highway
 CalEnviroScreen 3.0 - Disadvantaged Communities
 75th Percentile or Higher

Fresno County General Plan

	Possible Disadvantaged Unincorporated Communities	General Location
1	Benito	South of Firebaugh on HWY 33
2	Broadview Farms	West of Firebaugh on Bullard Ave.
3	Burrel Community	NE of Five Points on Elkhorn
4	Camden	East of Riverdale on Mt Whitney
5	Caruthers	Conejo west of 41
6	Church/Floyd Ave. Community	SW of Kerman
7	Cornelia/Floral Avenue	NW of Caruthers
8	Cromir	South of Firebaugh on HWY 33
9	Three Rocks/El Porvenir	CSA 30 Community – west of Cantua Creek/HWY 33
10	Cantua Creek	CSA 32 Community – Clarkson east of HWY 33
11	Raisin City	CSA 43 Community – NW of Caruthers/ Manning Ave
12	O’Neil Farms/Westside	CSA 49 Community – Hwy 145/Excelsior Ave
13	Five Points	Hwy 145 /Mt Whitney
14	Hayes Rd/Perrin Colony	Community near Raisin City
15	Helm	HWY 145/Kamm Ave
16	Hughes/Magnolia Ave	Community south of Caruthers
17	Ingle	South of HWY 180 east of Mendota
18	La Jolla Ranch	Brannon Ave, west of Fairfax, NW of Pilibos Ranch
19	Lanare	Mt Whitney east of Five Points
20	Laton	East of Camden on Mt Whitney
21	Madera Avenue Community	South of Kerman on HWY 145
22	Murietta Farm	Washoe/Lincoln Ave area – SE of Pilibos Ranch
23	Oro Loma	NW of Firebaugh on west Althea
24	Oxalis	North of Firebaugh on HWY 33
25	Pilibos Ranch	SW of Mendota on W. Panoche Road
26	Riverdale	Mt Whitney east of Lanare
27	Russell Ave Community	NW of Firebaugh at Merced County Line
28	Tranquility	NW of San Joaquin
29	Yuba Avenue Community	SW of Kerman
	Possible Incorporated Cities	
30	Firebaugh	HWY 33 / Avenue 7
31	Mendota	HWY 33 / HWY 180
32	Kerman	HWY 180 /HWY 145
33	San Joaquin	Manning Ave / S. Colorado Ave.
34	Huron	HWY 198 / HWY 269
35	Coalinga	HWY 198 / HWY 33



FRESNO COUNTY GENERAL PLAN

GOALS AND POLICIES **2** ENVIRONMENTAL JUSTICE

GOAL EJ-A

To ensure the fair treatment of people of all races, cultures, and incomes with respect to the development, adoption, implementation and enforcement of environmental laws, regulations and policies do not disproportionately impact any individual race, any culture, income or education level.

GOAL EJ-B

To promote physical activities in unincorporated communities by creating equitable opportunities for bicycling, walking, and access to open space areas.

GOAL EJ-C

To have consistent, equitable, and improved access to healthy foods and beverages, health services, and resources that enhance quality of life.

GOAL EJ-D

Ensure that Fresno County residents have equitable access to safe and sanitary living conditions.

GOAL EJ-E

Encourage and facilitate equitable civic engagement in the decision-making process by all County residents.

Dillon Savory (Fresno, Madera, Tulare and Kings Counties Central Labor Council): Organized Labor/Community Partner perspectives for working together to fully capture the Clean Energy Transition Opportunity for maximum community benefits

Terry Watt (Terrall Watt Consulting): Overview of Pre-Release Hard Copy of CATF Report: ‘An Exploration of Options and Opportunities for the San Joaquin Valley’s Clean Energy Future’ – To be made public via CATF website April 23, 2024

Daniel Kim (Golden State Clean Energy):
Update on Valley Clean Infrastructure Plan (VCIP)
Transmission and Generation.


Overview of the Valley Clean Infrastructure Plan

*“Master Plan for Clean Infrastructure for
California and America’s Future”*

April 2024



Westlands Solar Park



GSCE master plans clean energy infrastructure through an innovative approach, creating value for customers, property owners & local communities

SOLAR FOR THE CLEAN ENERGY FUTURE | Approximately 8,000 MW'S (PV) in interconnection queues plus storage

STRATEGIC ENGAGEMENT | We identify and pursue unique clean infrastructure opportunities to solve local or regional challenges. Pursue win-win-win opportunities for our customers, local communities and the environment.

COMMITMENT TO CALIFORNIA | California-based, California-owned Company pursuing and realizing creative and unique solutions for Californians.

RESULT IS BROAD SUPPORT | Strong support from a wide variety of parties, including NGOs, labor, state and local governments, and agriculture groups

Core Components of Master Planning for Renewables



Sufficient appropriate land



Permitting strategy



Access to transmission corridors



Support of core constituents



Regulatory alignment



Workforce development

Solar Development in the Central Valley is Essential to Meet California's Clean Energy Goals



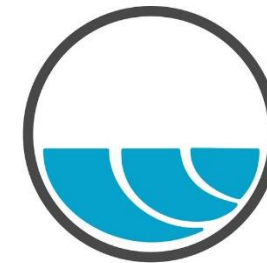
A Landmark Public-Private Collaboration

Golden State Clean Energy and Westlands Water District are working together on the environmental review, permitting, and land entitlements necessary for large-scale solar development and rights of way to establish necessary transmission corridors.

Westlands Water District is the largest agricultural water district in the United States, made up of more than 1,000 square miles in western Fresno and Kings Counties.

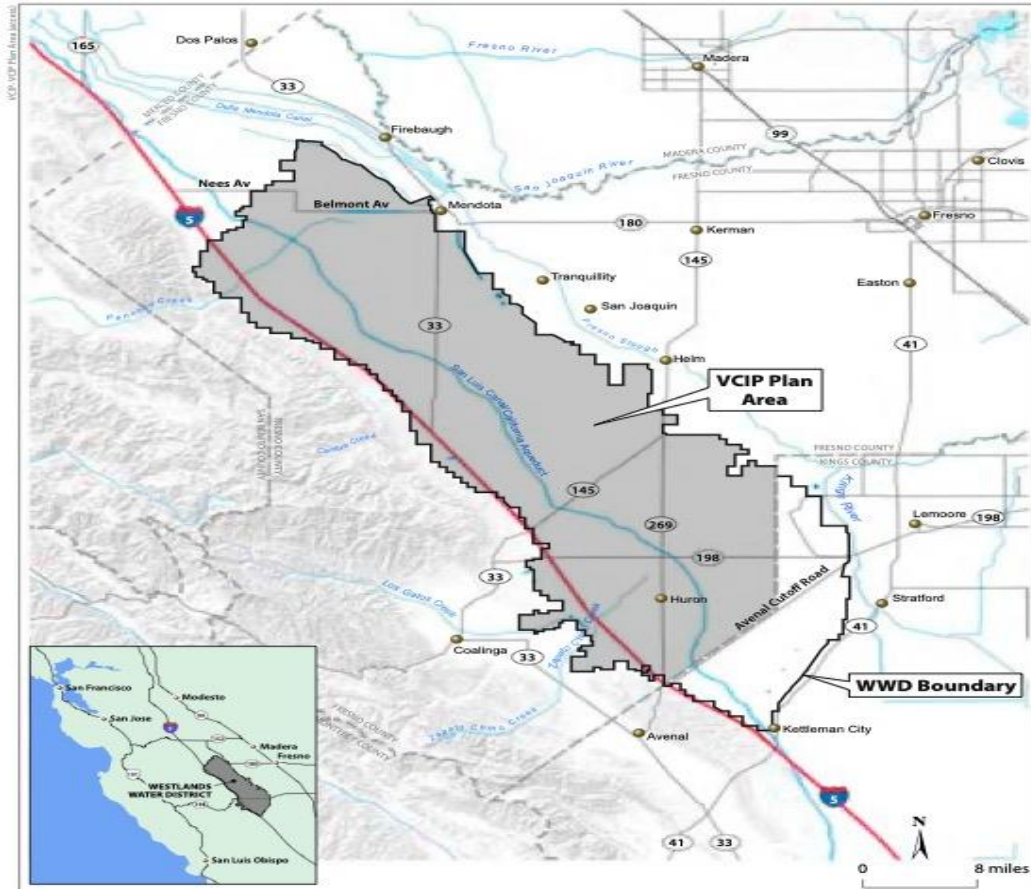


GOLDEN STATE
CLEAN ENERGY



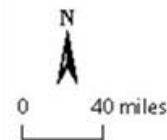
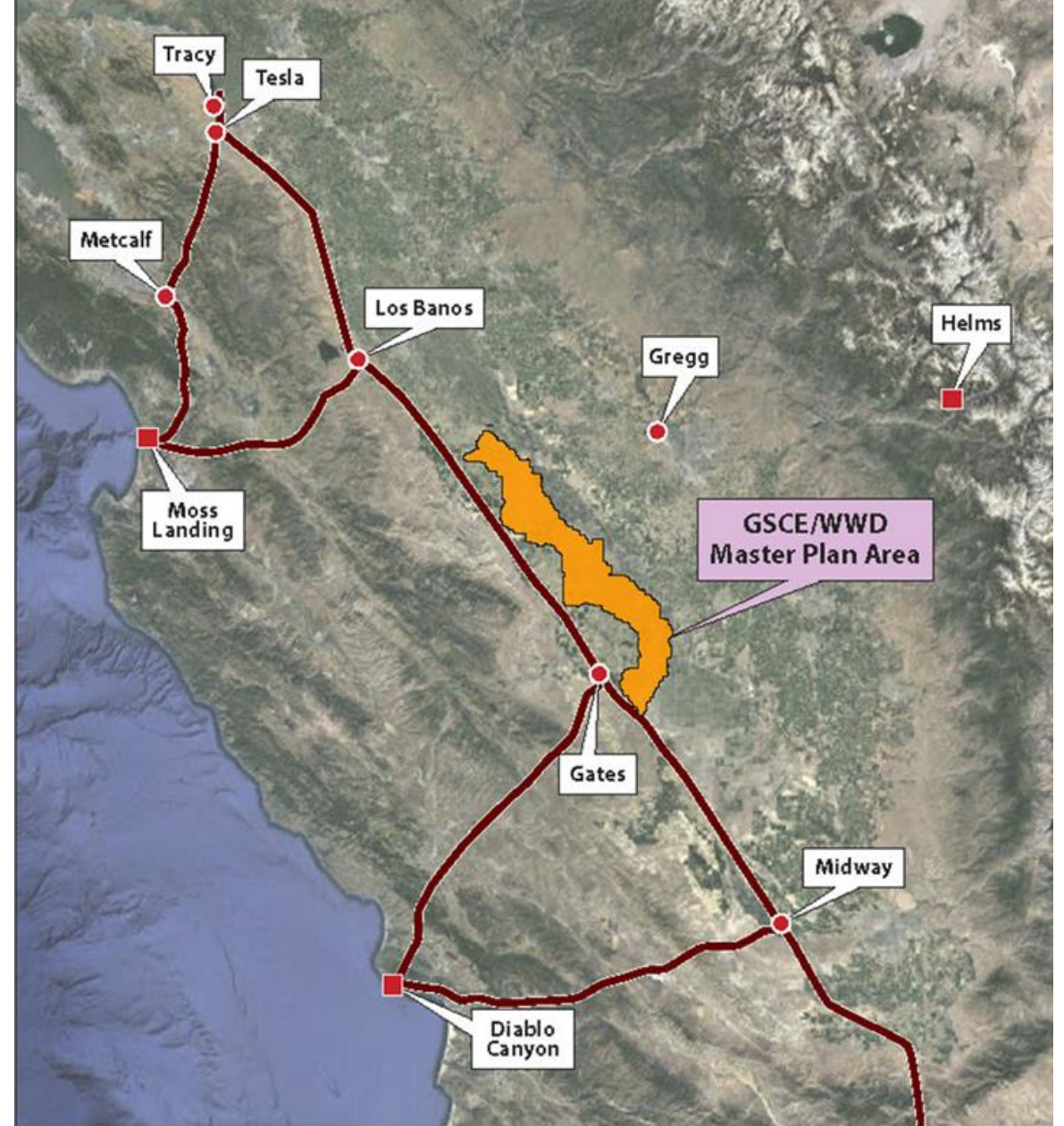
Westlands
Water District

130,000+ Acres Under Evaluation for Development in Westlands Water District



Source: Westlands Water District, 2022

Figure 1
Valley Clean Infrastructure Plan Area



- LEGEND**
- Existing 500-kV Transmission Lines
 - Power Plant Site
 - Substation



VCIP is an Innovative Approach to Creating Value for Customers, Property Owners, & Local Communities

SOLAR FOR THE CLEAN ENERGY FUTURE | Approximately 20,000 MW (PV), 20,000+ MW (storage) and hundred of miles of transmission lines to help meet California's future needs in an efficient and cost-effective manner

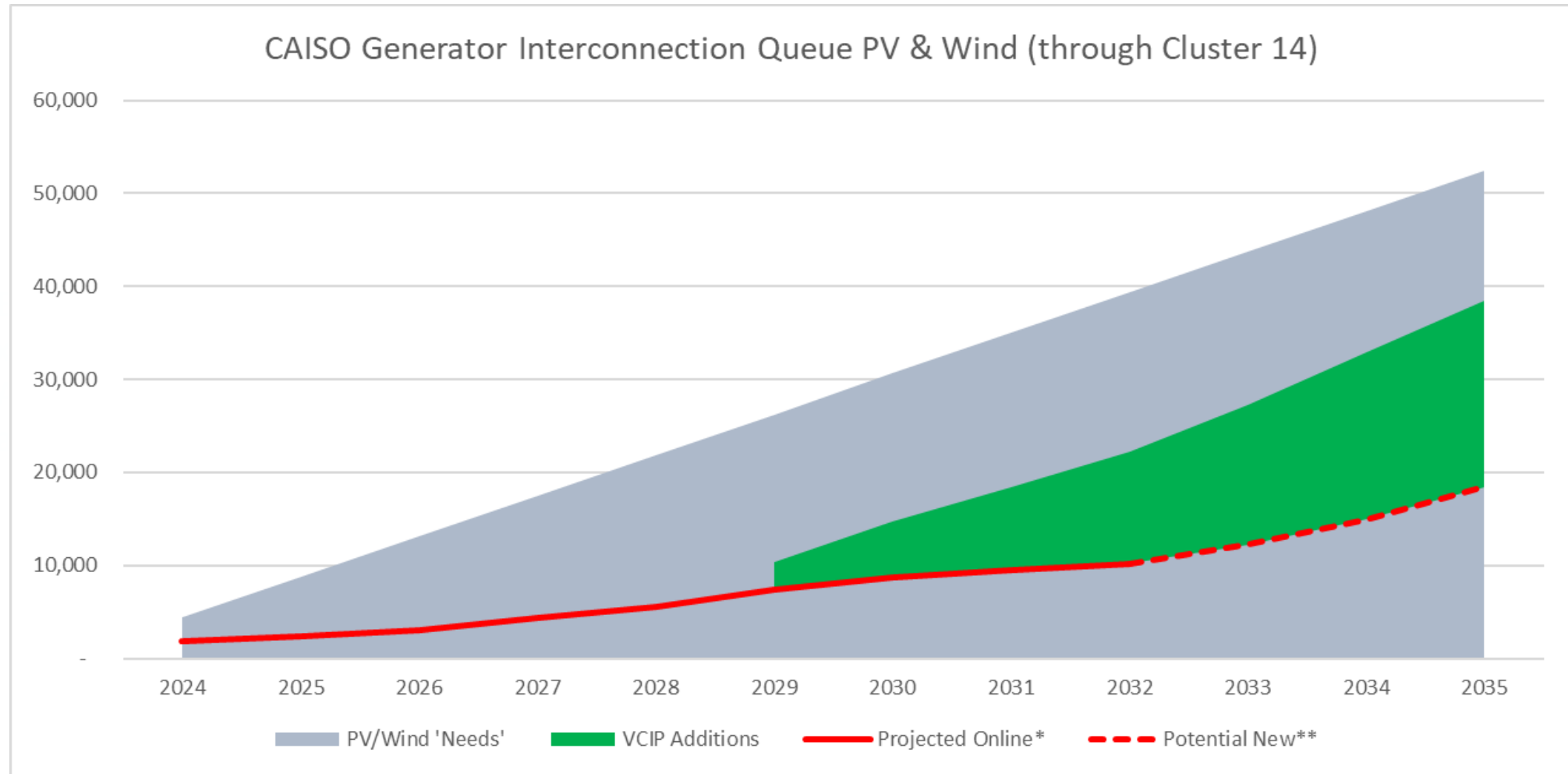
GARNERING BROAD SUPPORT | Strong support from a wide variety of parties, including environmental groups, labor, state and local governments, and agriculture groups

WATER BENEFITS | Saving water for productive farms while using less productive lands for solar provides a mutual benefit to the agricultural community

JOBS & ECONOMIC DEVELOPMENT | Potential for thousands of high paying jobs over the next 15+ years, plus economic development from opportunities for manufacturing, fabrication, assembly, and research and development.



VCIP Impact on CA Goals



* Probability weighted based upon a 6% success rate (historic average).

** Estimate of Cluster 15 or new projects that could be brought online (assumes current CAISO IPE leads to future success rates).

goldenstatecleanenergy.com

valleycleaninfrastructureplan.com



GOLDEN STATE
CLEAN ENERGY

**Elizabeth Jonasson (Westlands Water District): VCIP Policy
and Westlands Water District Environmental Document**



Westlands Water District

VCIP
April 22, 2024

Elizabeth Jonasson
Deputy General Manager, External Affairs

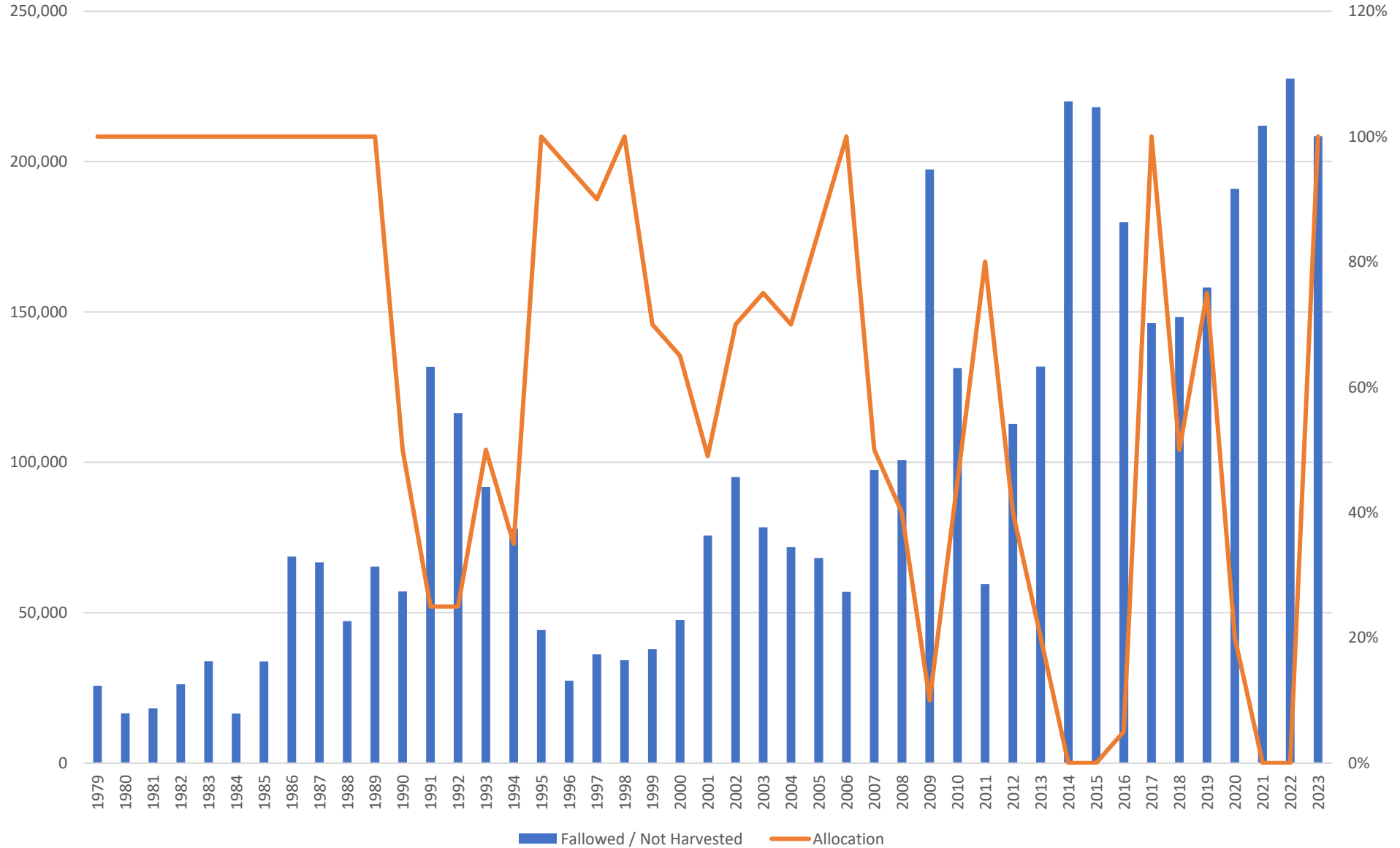
Westlands' Role



- Westlands serves as the CEQA lead agency for environmental review of the proposed VCIP and District-owned land is targeted for development under VCIP.



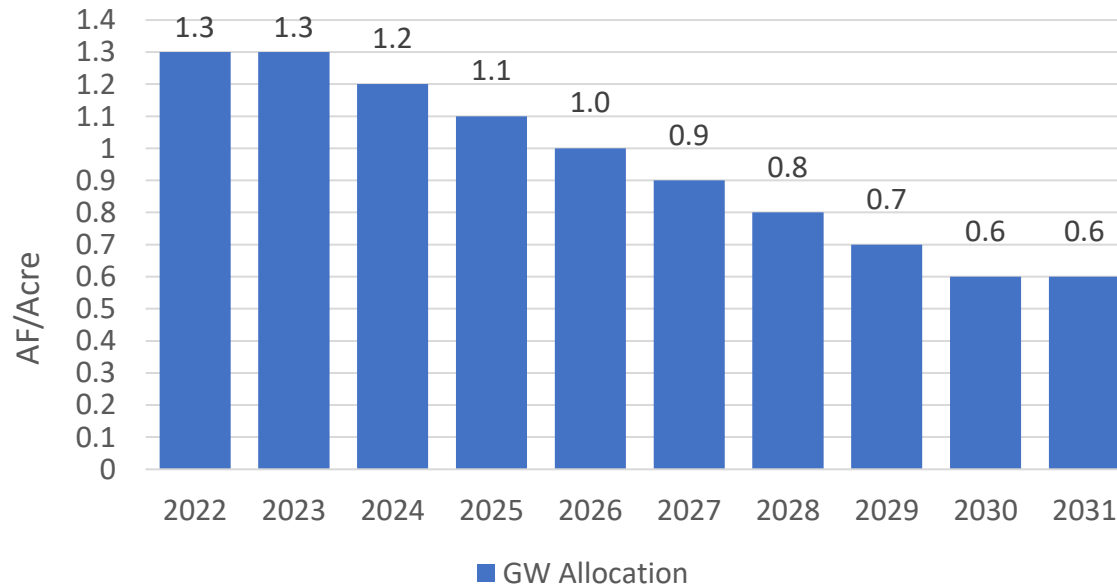
Fallowed and Not Harvested Land



Groundwater Allocation and Transition Period

- Sustainable yield of 305,000 AF/year
- ~525,000 acres eligible receive allocation
- Starting 2022, 8-year “Transition Period”
- **1.3 AF/acre taper to 0.6 AF/acre allocation**

Water Year	Allocation Cap
2022	1.3 AF per acre
2023	1.3 AF per acre
2024	1.2 AF per acre
2025	1.1 AF per acre
2026	1.0 AF per acre
2027	0.9 AF per acre
2028	0.8 AF per acre
2029	0.7 AF per acre
2030	0.6 AF per acre

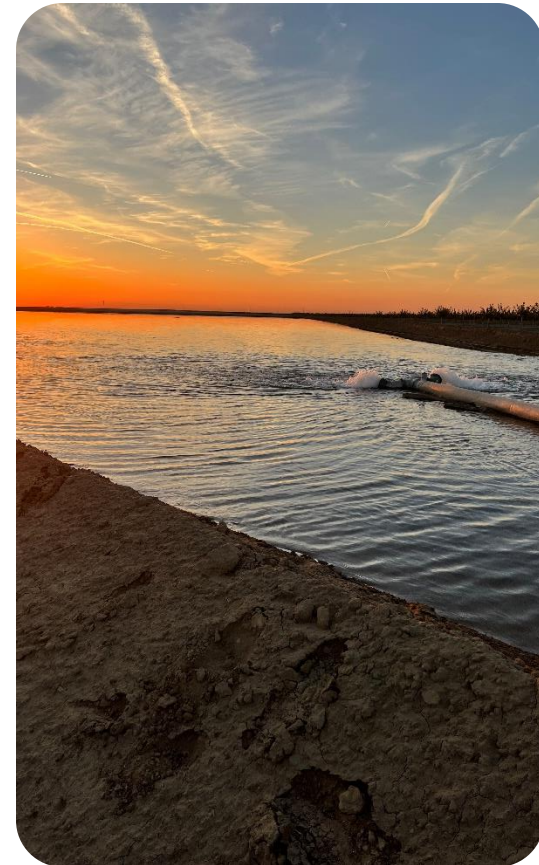


- Groundwater Recharge

INITIAL RECHARGE GOAL: 200,000 af
Hit goal in November 2023

UPDATED RECHARGE GOAL: 275,000 af
Hit goal in December 2023

TOTAL RECHARGE:
380,000 af
Since March 2023



Westlands' Proactive Approaches



Jose Antonio Ramirez: Breaking down the key
'Guiding Principles for Community Benefits Related
to Clean Energy Projects in the San Joaquin Valley –
see CATF Report

Keith Bergthold (RCI): Elevating ‘Community Determined Community Benefits’ by impacted communities in western Fresno County and supporting collaborative community capacities through Community Energy Fresno rural community nonprofit formation, organizational development, governance and management – PLUS - the need to establish a separate countywide JPA to buy power for a new era of diverse clean energy fueled industries, economic development and high paying jobs across Fresno County

Community Engagement to Ownership Spectrum

	0	1	2	3	4	5
Stance Towards Community	IGNORE	INFORM	CONSULT	INVOLVE	COLLABORATE	DEFER TO
Impact	Marginalization	Placation	Tokenization	Voice	Delegated Power	Community Ownership
Community Engagement Goals	Deny access to decision-making processes	Provide the community with relevant information	Gather input from the community	Ensure community needs & assets are integrated into process & inform planning	Ensure community capacity to play a leadership role in implementation decisions	Foster democratic participation & equity through community-driven decision-making; Bridge divide between Community & governance
Message to Community	"Your voice, needs & interests do not matter."	"We will keep you informed."	"We care what you think."	"You are making us think, (& therefore act) differently about the issue"	"Your leadership and expertise are critical to how we address the issue."	"It's time to unlock collective power and capacity for transformative solutions."

Purpose Statement for Community Energy Fresno used for filing Articles of Incorporation with CA Sec. of State by Jose Antonio Ramirez, Incorporator: To negotiate, receive and hold funds from Community Benefit Agreements, and accountably manage expenditure of funds according to bylaws that must be focused on improving rural community Social Determinants of Health.

Possible Working Draft Purpose Statement to be Expanded in Community Energy Fresno Corp. Bylaws: The purpose of Community Energy Fresno is to increase and sustain inclusive health, economic opportunity, civic engagement, social equity, community infrastructure and environmental quality for residents of the rural communities of western Fresno County. This purpose will be accomplished by a rural community nonprofit organization and representative board of directors that negotiate, receive, and accountably manage funds from Community Benefit Agreements based upon revenue sharing, direct payments and other forms of community benefits derived from clean energy and other types of related rural development incentivized by federal, state and local governments. Nonprofit organizational expenditures will be governed by Community Energy Fresno corporation bylaws that require focus on improving the Social Determinants of Health in all rural communities of western Fresno County.



Community Determined Community Benefits from Clean Energy Development based on The Social Determinants of Health

Community Benefits secured as Direct Payments and Revenue Sharing by the **Comunidades de Energía, Fresno (Community Energy Fresno)** 501c3 will be restricted via adopted bylaws to expenditures that focus on addressing the ‘Social Determinants of Health’ in member communities as determined by the Board of Directors. Other forms of Community Benefits may also be negotiated as part of specific agreements with clean energy developers. Regardless of form, when contextualizing the general topic of Community Benefits to be refined by **Comunidades de Energía, Fresno (Community Energy Fresno)**, reference is made and will be incorporated into bylaws relating to the Federal Plan for Equitable Long-Term Recovery and Resilience (Federal Plan for ELTRR), which leverages the Vital Conditions for Health and Well-Being as the guiding framework related to The Social Determinants of Health.

The ELTRR vital conditions identify the factors that people depend on to reach their full potential, organized into 7 categories:

- Belonging + Civic Muscle
- Meaningful Work + Wealth
- Lifelong Learning
- Humane Housing
- Reliable Transportation
- Basic Needs for Health + Safety
- Thriving Natural World

Super CCA

Felipe Perez (Firebaugh City Council and SEEN Team/RCI): The need for Community Energy Fresno from the grassroots perspective in Western Fresno County

Jose Antonio Ramirez & Terry Watt: Wrap up with next steps proposed for non-profit board formation, requests, and conversation with from City Managers and audience with team members